

Shufflin' in F

(Track 7/24)

Jim Snidero

Chorus 1

♩ = 150

D7 G7 D7

5

G7 D7

9

A7 G7 D7

Chorus 2

13

D7 G7 D7

17

G7 D7

21

A7 G7 D7 A7

Chorus 3

25

D7

29

G7

D7



33

A7

G7

D7

A7



Chorus 4

37

D7

G7

D7



41

G7

D7



45

A7

G7

D7



Chorus 5

49

D7

G7

D7



53

G7

D7



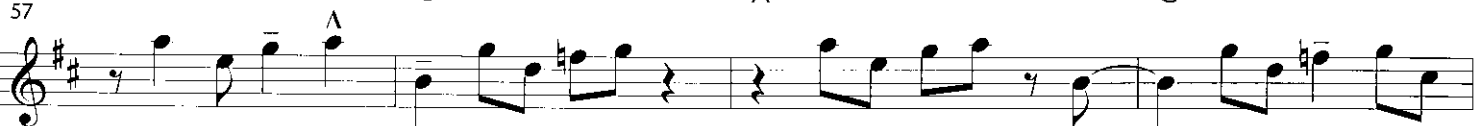
57

A7

G7

A7

G7



61

A7

G7

D7

C7

D7

A7alt.

D7

