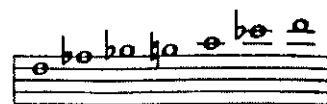




8. F BLUES



F BLUES SCALE

A Little of This?

♩ = 100

First system: F7, Bb7, F7, C-

Second system: Bb7, Bb7, F7, A∅, D7+9

Third system: G-, C7, A-, D7, G-, C7

B Play 4 Choruses

Chorus 1: F7, Bb7, F7, C-, F7

Chorus 2: Bb7, Bb7, F7, A∅, D7+9

Chorus 3: G-, C7, A-, D7, G-, C7

C Play 4 Choruses

Chorus 1: F7, Bb7, F7, C-, F7

Chorus 2: Bb7, Bb7, F7, G-, A-, Ab-

Chorus 3: G-, C7, A-, D7, G-, C7